

Customer :

customer

Customer part :

customer part

Comment :

Comment

S1=0.58

S2=1.38

Tmax=328

Tp S2=367.0

PI=0.3

HI=26

Sample =2917.0

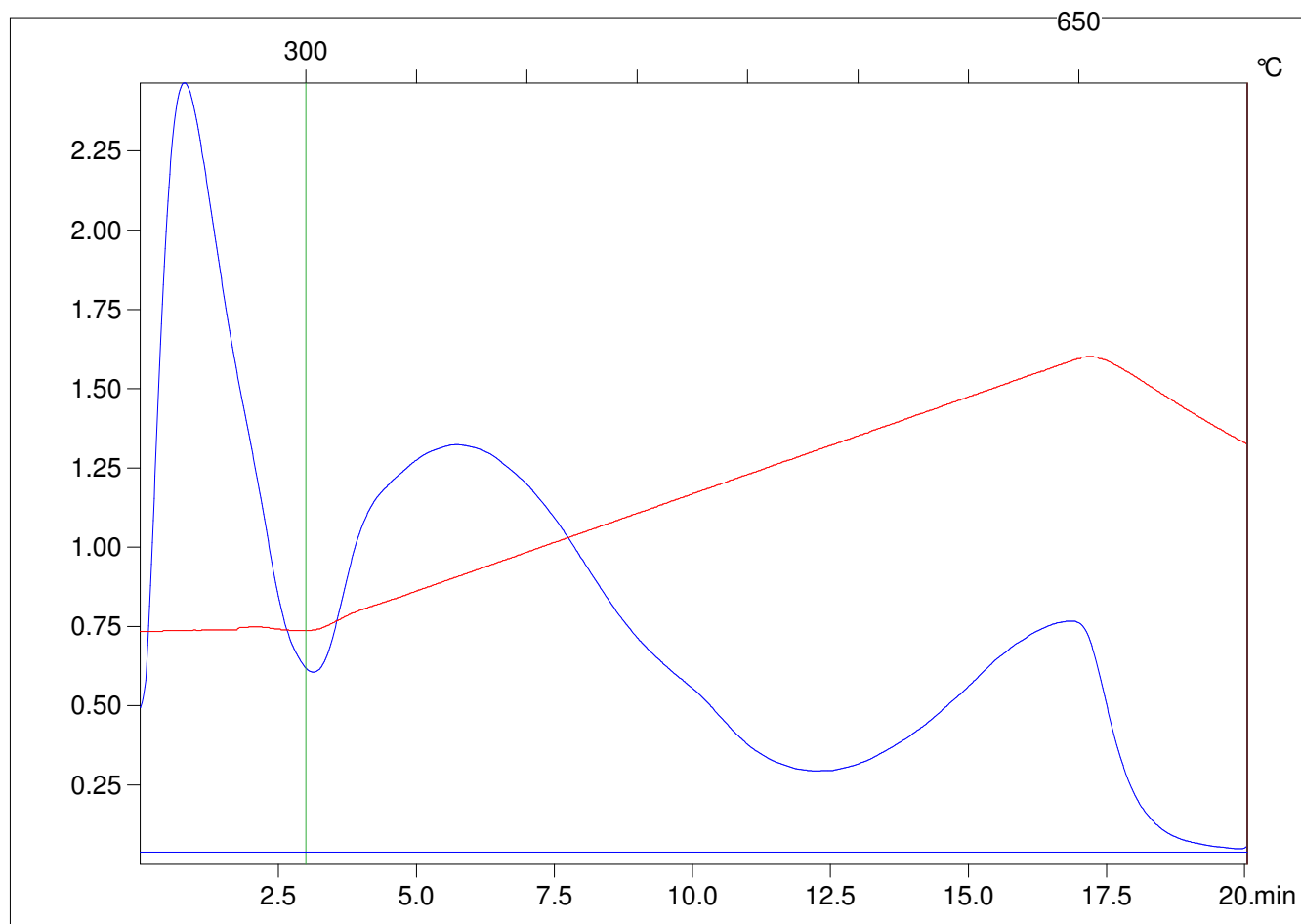
Method =Bulk Rock

Cycle=Basic

KFID(10*9)=1550

Qty =70.3

TOC=5.38



C:\VINC\PK130315\PK016.R00 : FID pyrolysis graphic

State

Pyro Status

Oxi Status